

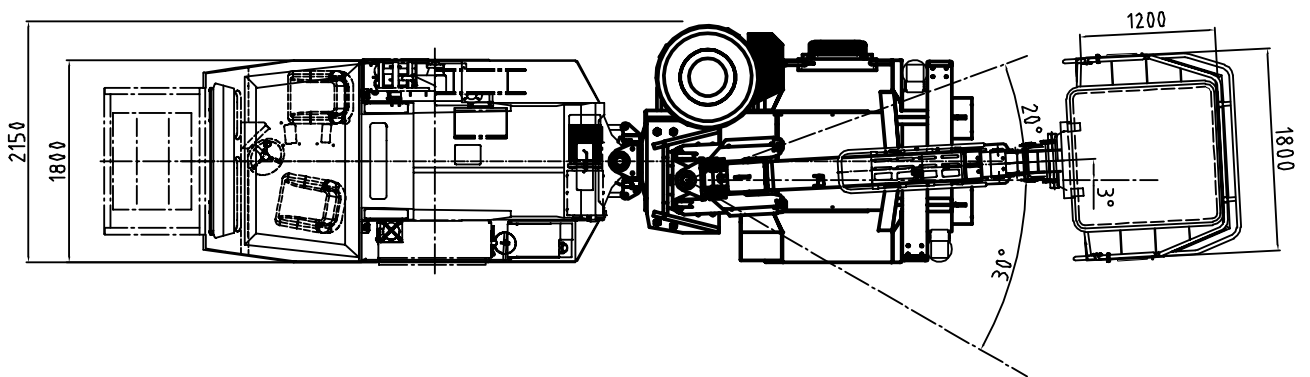
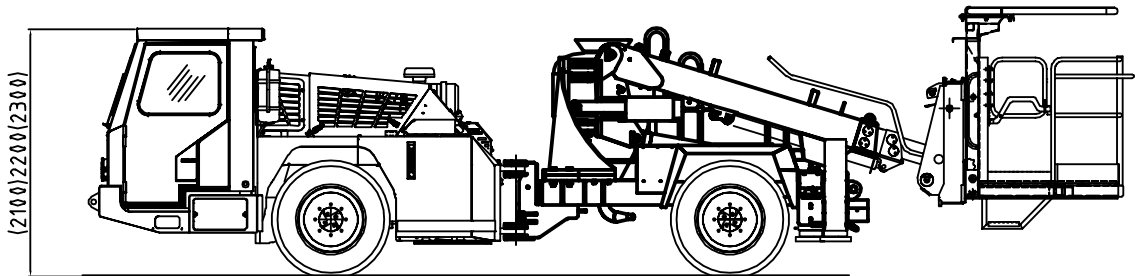
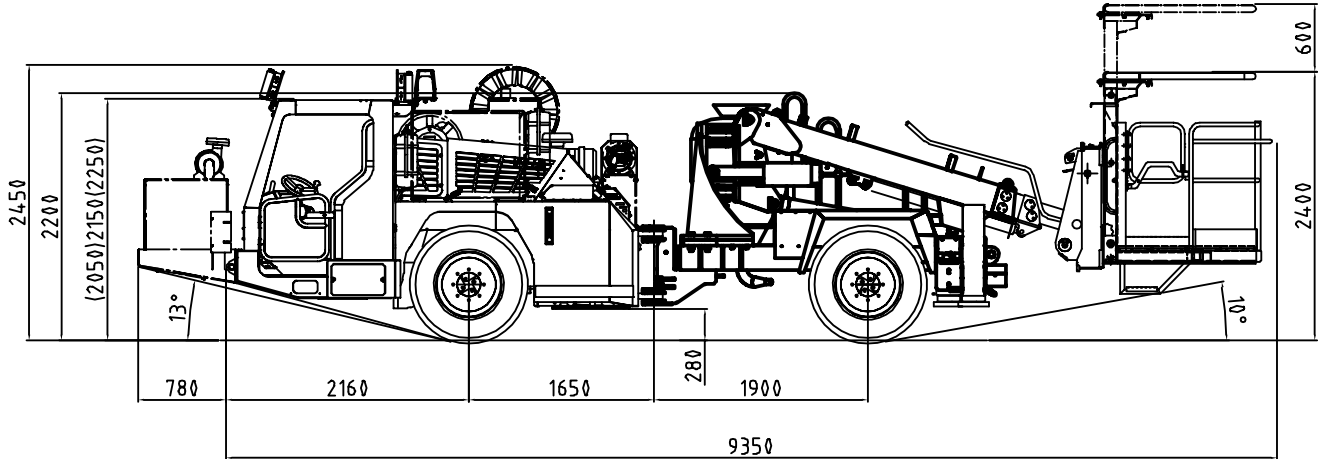
normet

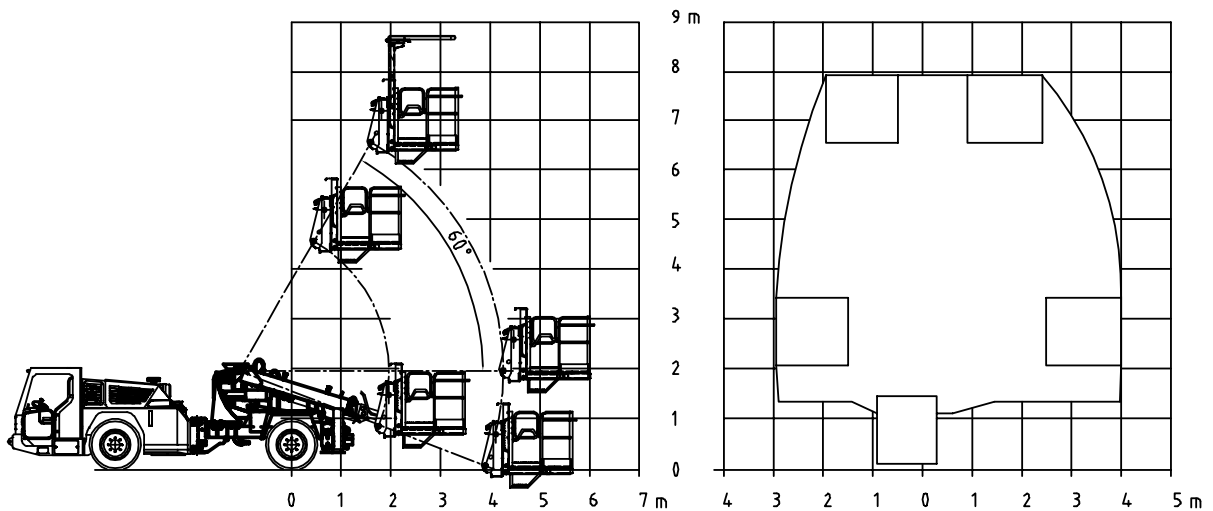
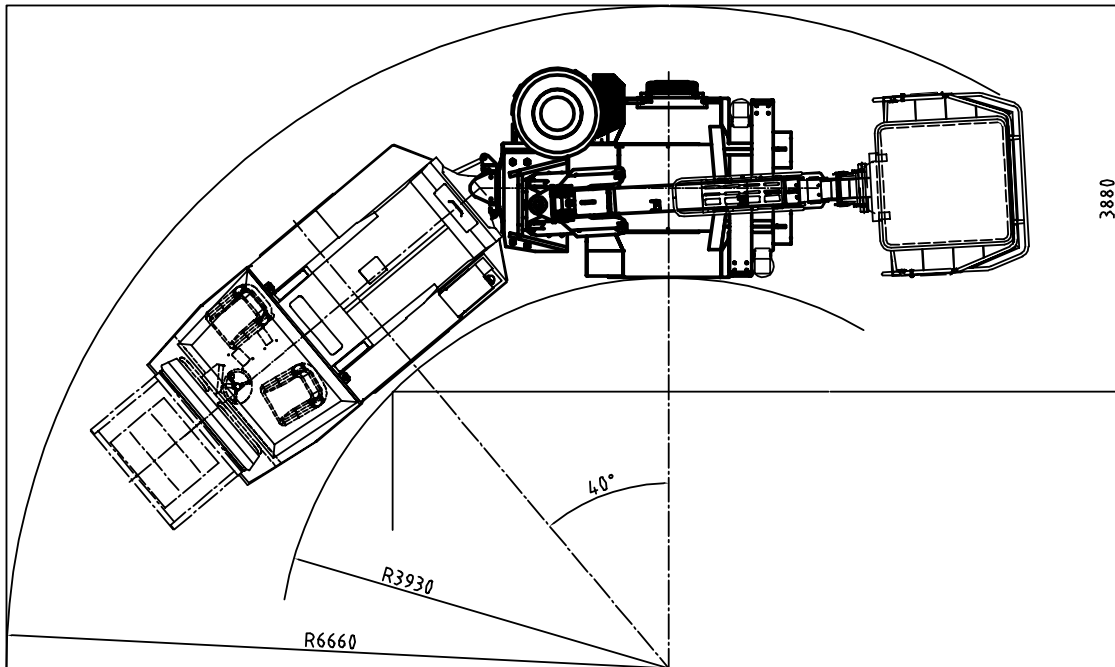
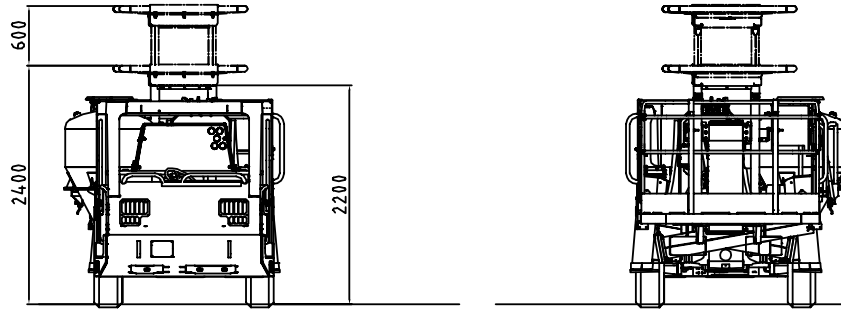
Normet Oy
Ahmolantie 6
FI-74510 IISALMI, FINLAND
Tel +358 (0) 17 83 241
Fax +358 (0) 17 823 606
info@normet.fi www.normet.fi

Charmec 6605 B

TI 1700839
DATE 13.06.2012
PAGE 1 / 4

ANFO Loader with boom





DIMENSIONS

Length	9350 mm
Width	2150 mm
Height	2200 mm
Wheel base	3550 mm
Track	1500 mm
Ground clearance	280 mm

WEIGHT

Operating	10000 kg
-----------	----------

TURNING RADIUS

Outer	6660 mm
Inner	
- left (shown on drawing)	3930 mm
- right	3730 mm

NBB3S BASKET BOOM

Lifting capacity	500 kg
Lifting height	6500 mm
Boom slew	20° / 30°
Vertical working reach	8750 mm
Horizontal working reach	6950 mm
Hydraulic support legs	
Diesel start/stop from basket	
Battery operated emergency pump	

ANFO SYSTEM

Tank volume	500 L
Pressure	max. 7 bar
Remote controls in basket	

PERFORMANCE CURVE

	4800031
1st gear	max. 5 km/h
2nd gear	12 km/h
3rd gear	25 km/h
Max. tractive effort	90 kN

TRANSMISSION

Dana powershift
3 speeds forward and reverse
4-wheel drive

AXLES

Planetary type	
rear axle fixed	
front axle oscillation	+/- 10°

TYRES

10.00 - 20 PR 16

BRAKES

Service brake: hydraulically powered dual-circuit oil immersed multidisc brakes in both axles
Safety/Parking brake: hydraulically released fail-safe -type brake

STEERING

Hydraulic frame steering,
Orbitrol type
Frame articulation +/- 40°

HYDRAULICS

210 bar, 95 L/min/2200 rpm

ENGINE

Deutz TCD 2012 L4
96 kW/2200 rpm

ELECTRICAL SYSTEM

24 V negative ground
Battery 2 x 110 Ah
Alternator 80 A
Lights (2+2) x 70 W

DRIVER'S CABIN

Open 2-man cabin FOPS/ROPS approved

OPTIONAL EQUIPMENT:**360 L Anfo vessel****720 L Anfo vessel****Anfo hose 22/28mm - 30m****Anfo hose 26,5/33,5mm - 30m****Anfo hose 41,5/51 - 30m****Anfo hose 19/25mm - 60m****Anfo hose 22/28mm - 60m****Anfo hose 26,5/33,5mm - 60m****Anfo hose 41,5/51 - 60m****Enclosed cabin for NT60 (ROPS/FOPS)****Mercedes-Benz OM 904 LA 90 kW engine****Xenon working lights on cabin (2 + 2 pcs)****LED driving lights (4 + 2 pcs)****LED working lights on cabin (2 + 2 pcs)****ADDITIONAL EQUIPMENT:****Electro hydraulic drive 15kW:**

- 400 V / 50 Hz with 50 m cable and hydr. reel
- 440 V / 50 Hz with 50 m cable hydr. reel
- 690 V / 50 Hz with 50 m cable hydr. reel
- 1000 V / 50 Hz with 50 m cable hydr. reel

CD/Radio system**Cabin heating****Air conditioning****Safety bar****Safety roof with hydraulic lift****Safety roof with hydraulic lift and slide****Fogmaker extinguishing system (manual)****Fogmaker extinguishing system (automatic)****Ansul extinguishing system (manual)****Ansul extinguishing system (automatic)****Tempus manually actuated (Non CE)****Automatic lubrication system for carrier and lifter (Lincoln)****4 m3/min hydraulic driven compressor on front rack****Fast fuel filling system Wiggins****1 extra hand held fire extinguisher (12 kg)****1 extra rotating beacon amber****1 extra rotating beacon red****1 extra rotating beacon blue****1 extra strobe light white****Tools for maintenance****2 pcs wheel chocks with brackets****Reversing camera****NT60 spare wheel****Text labels in:****Fin / Por / GB / Swe / Rus / Nor / Ger / Fra / Spa / Ita****LTC SERVICES****SPARE PARTS****Spare parts package A:** Available for 1000 h of use*. Include periodical service, most common wearing parts and most critical safety parts.**Spare parts package B:** Available for 3000 h of use*. Include periodical service, most common wearing parts and most critical safety parts.

* Recommendations are based on average hours - can vary a lot depending on work site conditions.

TRAINING SERVICES

Available before delivery, at start up and after delivery

Product training:

Operation and Maintenance

NorSmart

Foundation of electrics, hydraulics and mechanics

Audit

Process training:

Concrete spraying

Charging

Process audit

AUDIT SERVICES

To improve performance of the machines

To improve the performance of your processes

To help improve the quality of maintenance operations

SERVICE CONTRACTS

Spare parts supply programmes

Scheduled inspection programmes

Supervision programmes

Periodic maintenance programmes

Machine usage programmes

LINK ONE

Link One electronic spare part manuals

WARRANTY SERVICES

Extended warranty