



Equipment includes options and extra equipment.

Features

The Spraymec NorRunner 100 DVC is designed to be used in tunnel profiles up to 14.5 m in height and 20 m in width and offers a maximum longitudinal spraying reach of 8 m in up to 12 m high tunnel from one set-up.

The NorRunner features the new NSP 30 concrete pump with a maximum theoretical output of 30 m³/h and an on-board compressor with a capacity of 12 m³/min with 7 bar constant pressure to deliver enough air for spraying operations. The state-of-the-art NorSmart control system is used to control all spraying, accelerator dosing and boom functions.

Two 1,000 L plastic containers with heaters and mixers are provided for the accelerator. A hydraulically operated generator supplies electric power for heaters and mixers during driving, allowing safe operation during the winter season.

The spraying operation can be powered either by diesel drive or by electric power packs. With the selected chassis and the best transmission on the market, high output hydraulic pumps can be used to run the compressor and concrete pump as well as all other functions needed. Independent operation without a high voltage system is crucial for sites in remote places.

Technical specification

CARRIER

Diesel engine OM 501 LA V6, 11,9 L
BlueTec 5 (Euro 5) Telligent -diesel engine control
Gearbox Mercedes PowerShift G330-12/11, 63-0,77,
semi automatic
Drum brakes
Parking brakes in axles 1,3 and 4
Steel springs
Four axle -type
Full power PTO with flange
PTO behind the engine with flexible clutch, max 600 Nm
Mid long cabin (+250 mm)

SPRAYBOOM SB 508 B

Automatic functions:

- Vertical and horizontal stabilization
- Nozzle rotation
- Telescopic stroke (upper boom)

Upper boom telescope equipped with self lubricating
bronze slide pieces and slide rollers

The speed of the movements can be adjusted from the
display

All the movements are pressure compensated and have
a proportional output

Boom coverage:

- Lateral 20 m
- Vertical normal 10,8 m
- Vertical max 14.5 m

Sliding boom table with 3m slide

CONCRETE PUMP

Spraypump NSP 30

Low-wear and low-maintenance double piston pump:

- Pumping capacity theoretical 3 - 30 m³/h
- Pumping cylinder diameter 200 mm
- Cylinder stroke 600 mm
- Pumping pressure max. 51 bar
- Hydraulic pressure max. 250 bar

High pumping pressure enables the conveying of stiff
concrete

The pump is able to pump up to max. aggregate size of 16
mm (including crushed) and all types of fibres (max. length
60 mm) in the mix

Sophisticated control system (hydraulic and electric sys-
tems) provides low pulsation concrete flow

Hydraulically driven agitator

The pump group can be lifted up and down and disman-
tled easily from the machine. Controls for lifting in driver's
cabin and at the concrete pump.

Specially designed hopper with foldable cover for spill
and transport protection

Concrete pump override switches

HIGH VOLTAGE ELECTRICS

Power supply for the electrical functions
1000 V, 50 Hz. Cable type 3 x 35 mm² + 3 x 6 mm²
Hydraulically driven cable reel
Cable length 150 m
Cable in/out reeling function from the cabin, near the
reel and beside the concrete pump

COMPRESSOR

Hydraulically operated screw compressor
FAD 12 m³ at 7 bar
90 kW power pack for compressor with electric operation
Air flow to nozzle adjustable in three steps (8 m³, 10 m³
and max. flow)

REMOTE CONTROL SYSTEM

Two displays, master display on the main electric box,
second one at the rear

Two joystick control system for the boom and the
sliding table

Following features can be adjusted or switched on/off
from the control box:

- Accelerator dosing rate
- Accelerator pump on/off
- Concrete pumping speed
- Concrete pump on/off/reverse
- Air flow to nozzle on/off and air rate in three steps
- Nozzle quick wash on/off
- Wall washing on/off
- Automatic horizontal levelling on/off
- Automatic second telescope zoom in/out on/off
- Nozzle rotation on/off
- Sliding table forward and reverse

ACCELERATOR SYSTEM

Hydraulically driven Mono pump

Max. pumping pressure 12 bar

Dosing rate 0.5...16 L/min (30 – 960 L/h)

Accelerator flow fully synchronized with the concrete
output

Suction line diameter 2" (50 mm)

Pressure line diameter 1" (25 mm)

Possibility of using 2 x 1000 L intermediate bulk
containers (IBC)

CONCRETE LINE

Concrete line diameter 76 mm

Place for concrete pipes and concrete hoses during
tramping

Technical specification

CONTROL SYSTEM

Integrated, seamless NorSmart control and diagnostic system. NorSmart controls:

- Spray boom
- Concrete pump
- Accelerator dosing system
- Safety requirements
- Fault diagnostics
- Data logging

WATER REEL AND TANK

Hydraulically driven water reel:

- Hose length 60 m
- Hose size 1" (25 mm)
- Controls in cabin and at concrete pump

350 L stainless steel tank

HIGH PRESSURE WATER WASHER

Hydraulically operated pressure washer with hose reel:

- Max. water pressure 180 bar
- Max water flow 30 L/min
- Hose length 30 m

HYDRAULIC SYSTEM

Electro-hydraulic power pack 55 kW for concrete pump, boom and other spraying functions

Diesel driven hydraulic pump unit for compressor, concrete pump boom and agitator/dosing system.

Diesel driven hydraulic pump for the hydraulic driven generator and emergency use.

MB CARRIER AND 24 VDC ELECTRICAL SYSTEM

Battery 2 x 220 Ah

Alternator 80 A

Spraying module wire harness (self extinguishing) with tinned wires and watertight conduits and exposed components are min. IP 65 standard

WORKING LIGHTS

24 VDC LED working lights in the SB 508 B Boom (6 pcs)

GREASING SYSTEM

Automatic lubrication system for the boom and sliding table. (Nozzle end not included)

Centralized manual lubrication for carrier

GENERATOR

Hydraulically operated generator

- Power 10 kVa / 400 V (7 x 230V / 1 x 400 V sockets)
- Controls in cabin

FORM OIL SYSTEM

Air pressure-driven system with hose reel:

- Tank capacity 40 L
- Hose length 30 m
- Working pressure 7 bar

ROCK WALL WASHING SYSTEM

Hydraulically operated pressure washer for wall:

- Max. water pressure 180 bar
- Max. water flow 90 L/min for wall washing

FIRE SUPPRESSION SYSTEM

Fogmaker: Automatic water mist system for carrier

OTHER

Extendable hydraulic support legs at the rear end
12 kg hand-held fire extinguisher

Standard symbol labels

Tool box for tools

Basic tool set:

- Cleaning plug
- Washing ball
- Hitting tool for nozzle
- Claw coupling
- Hose clamp
- Rubber hose 3/4" 4 m
- Carabiner
- Wrench for spraymec nozzles
- Sledgehammer 800g
- Nozzle tip d45mm plastic
- Cone for concrete piston assembly
- Special bolt for concrete piston assembly

Optional equipment

HIGH VOLTAGE ELECTRICS

400 V, 50 Hz. Cable 3 x 95 mm² + 3 x 16 mm², 100 m
690 V, 50 Hz. Cable 3 x 50 mm² + 3 x 10 mm², 150 m
With 690 V and 1000 V electrical systems, it is possible to use cables longer than 150 m. In these cases, cable length and size must be checked case by case

Additional equipment

OIL CONDITION MONITORING

Hydraulic oil diagnostic sensor

Boom and concrete pump hydraulic oil contamination monitoring and moisture % RH indicator
Gives alarm to NorSmart if the setting limits are exceeded

FOR RADIO REMOTE CONTROL

Recodrive: Enables driving and moving Mercedes via radio remote control when diesel engine is running

OIL FILTRATION SYSTEM

Bypass filter kit

For concrete pump and boom oil circuit:

- 0,5 µm filtration, extremely clean oil
- Also absorbs the water from the oil
- Longer lifetime for the hydraulic components
- Reduces cost of ownership

OTHER

Spare wheel with a rack
Water hose for cleaning the concrete pump

LTC services

SPARE PARTS

Spare parts package A: Available for 3000 m³ of pumped concrete*. Include periodical service, most common wearing parts and most critical safety parts

Spare parts package B: Available for 6000 m³ of pumped concrete*. Include periodical service, most common wearing parts and most critical safety parts

* Recommendations are based on average consumption - can vary a lot depending on used shotcrete and work site conditions

TRAINING SERVICES

Available before delivery, at start up and after delivery

Product training:

Operation and Maintenance
NorSmart

Foundation of electrics, hydraulics and mechanics
Audit

Process training:

Concrete spraying
Charging
Process audit

AUDIT SERVICES

To improve performance of the machines
To improve the performance of your processes
To help improve the quality of maintenance operations

SERVICE CONTRACTS

Spare parts supply programmes
Scheduled inspection programmes
Supervision programmes
Periodic maintenance programmes
Machine usage programmes

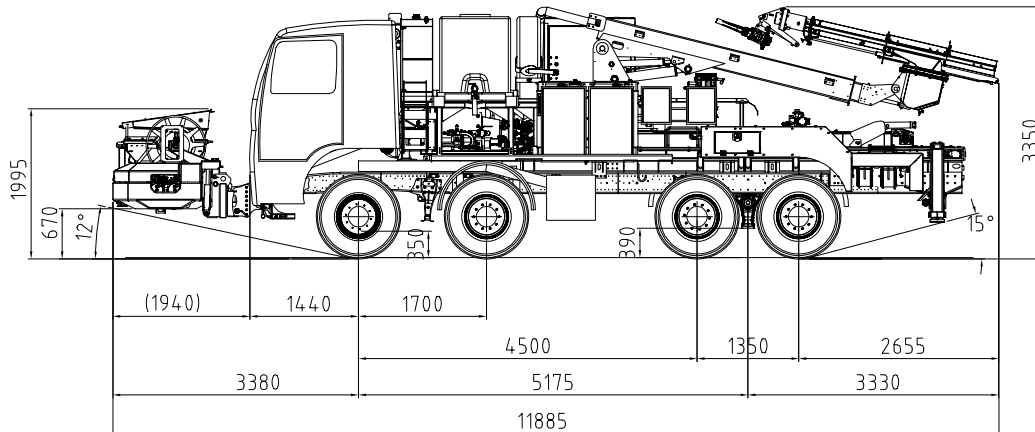
LINK ONE

Link One electronic spare part manuals

WARRANTY SERVICES

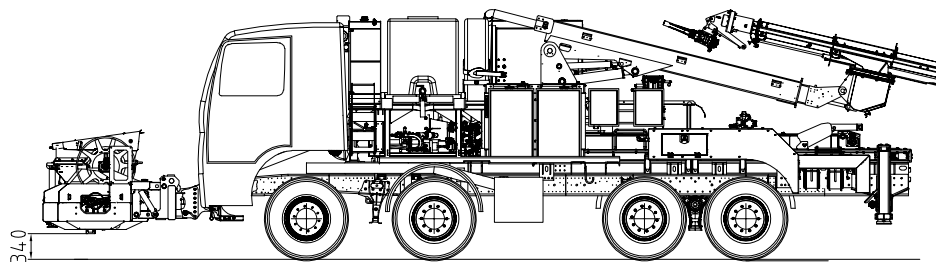
Extended warranty

Dimensions



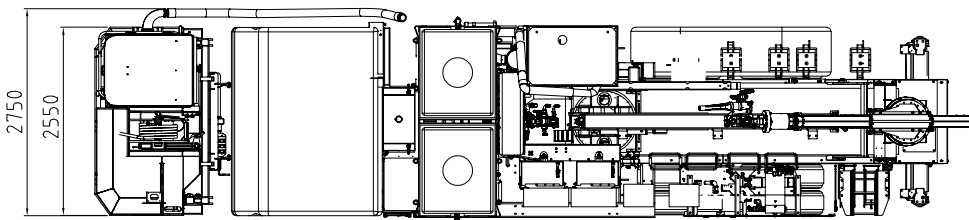
SIDE VIEW

Basic machine. Transportation and driving dimensions



SIDE VIEW

Basic machine. Concrete pump in low position



TOP VIEW

Basic machine. Transportation and driving dimensions

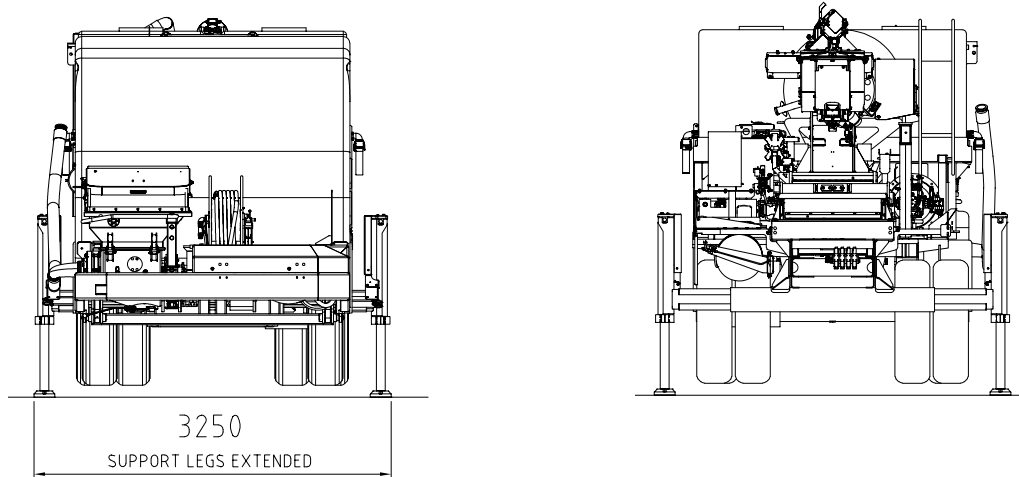
DIMENSIONS

Length	11885 mm
Width	2550 mm
Height	3350 mm
Wheel base	5850 mm
Ground clearance as shown	350 mm

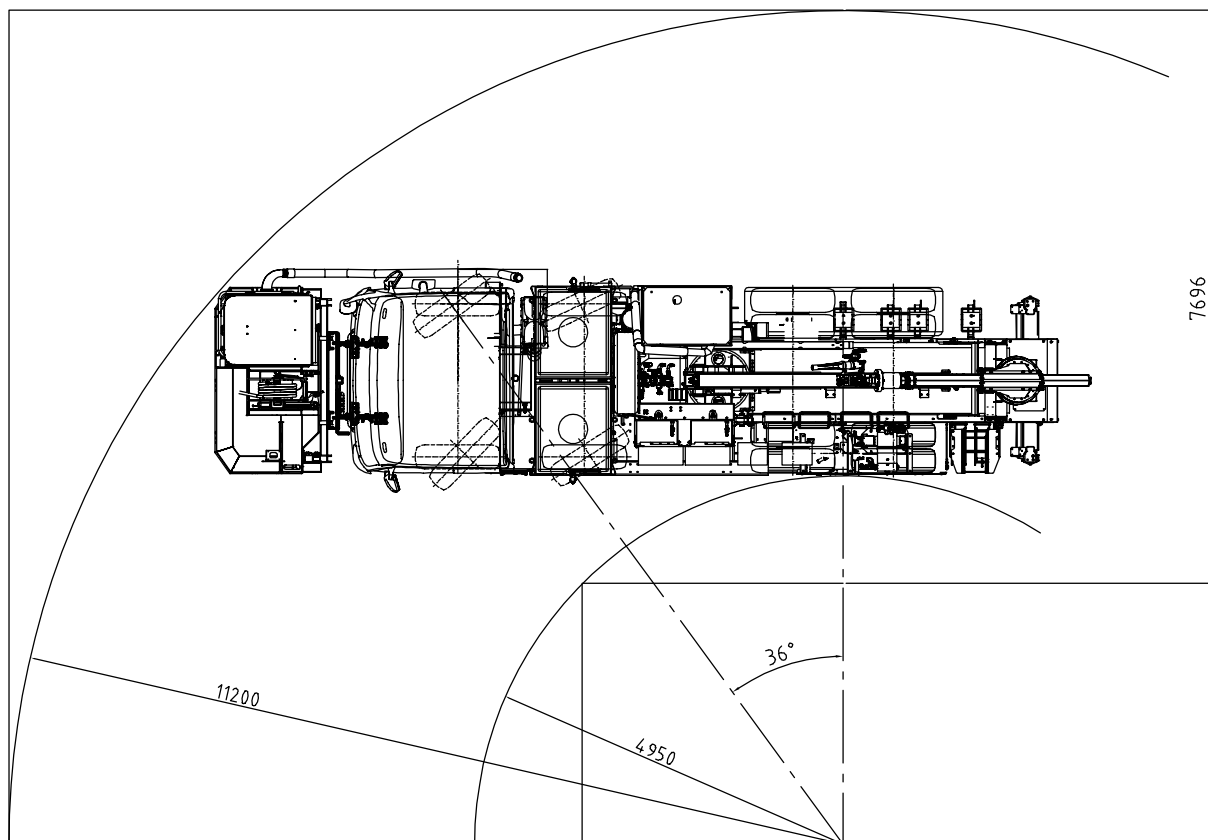
WEIGHT

Operating	26 000 kg
Max allowed	30 900 kg

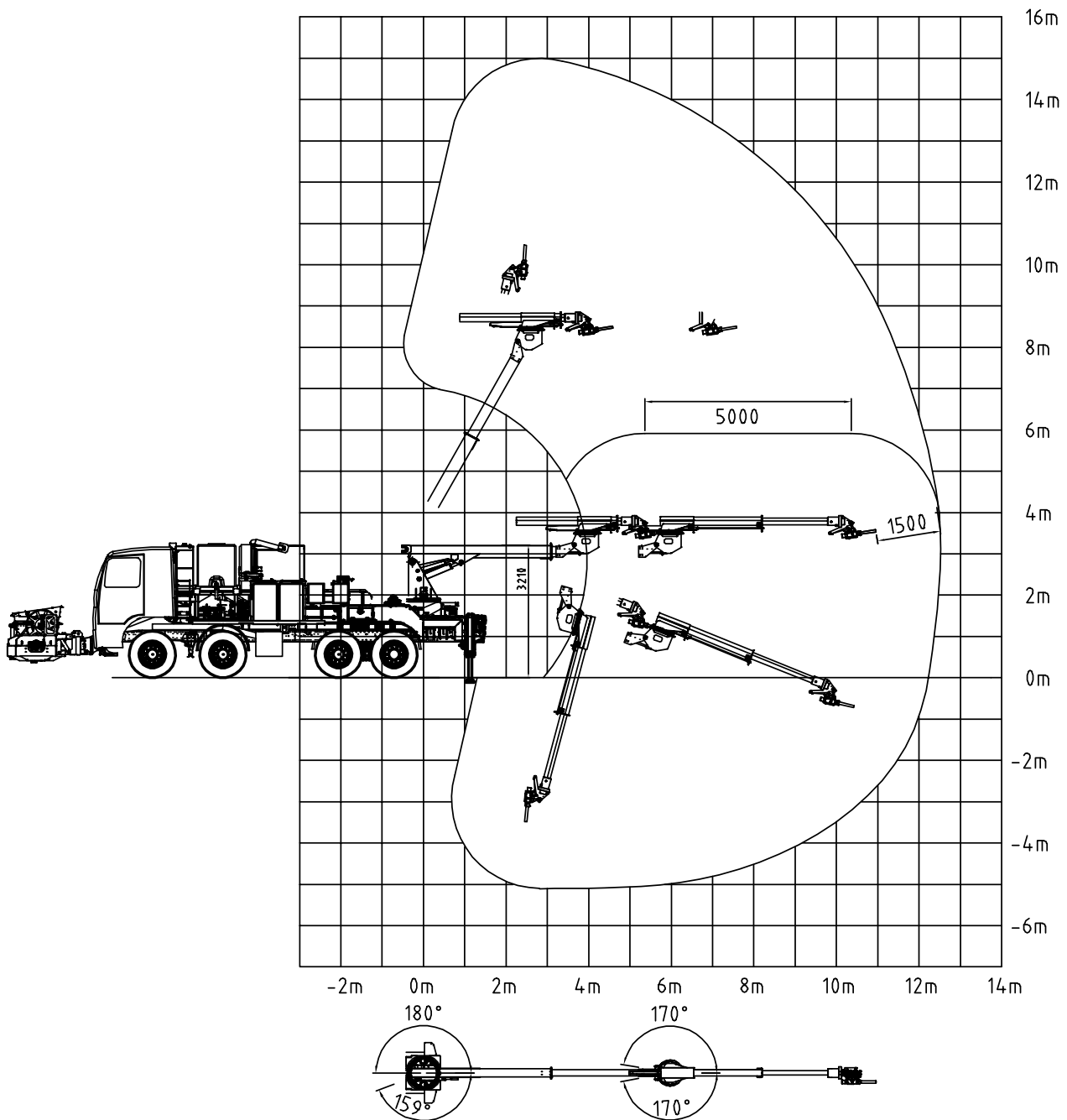
Normet reserves the right to change this specification without further notice.

Dimensions**FRONT AND REAR VIEWS**

Support legs extended

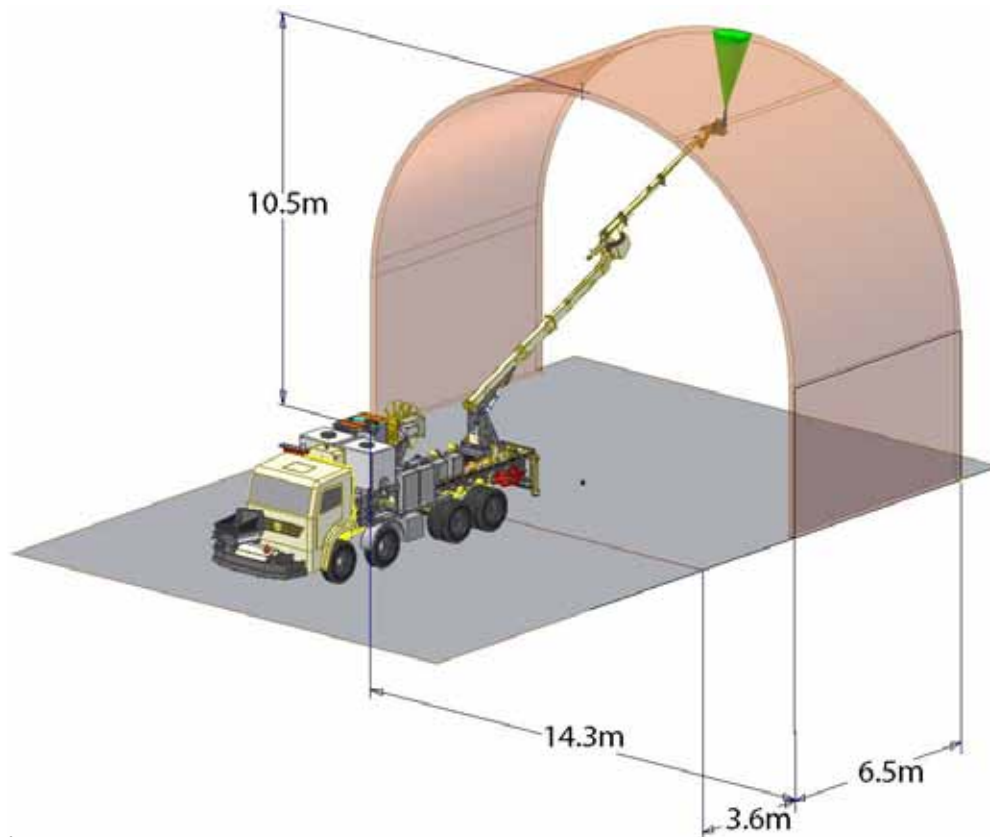
**TURNING RADIUS**

Normet reserves the right to change this specification without further notice.

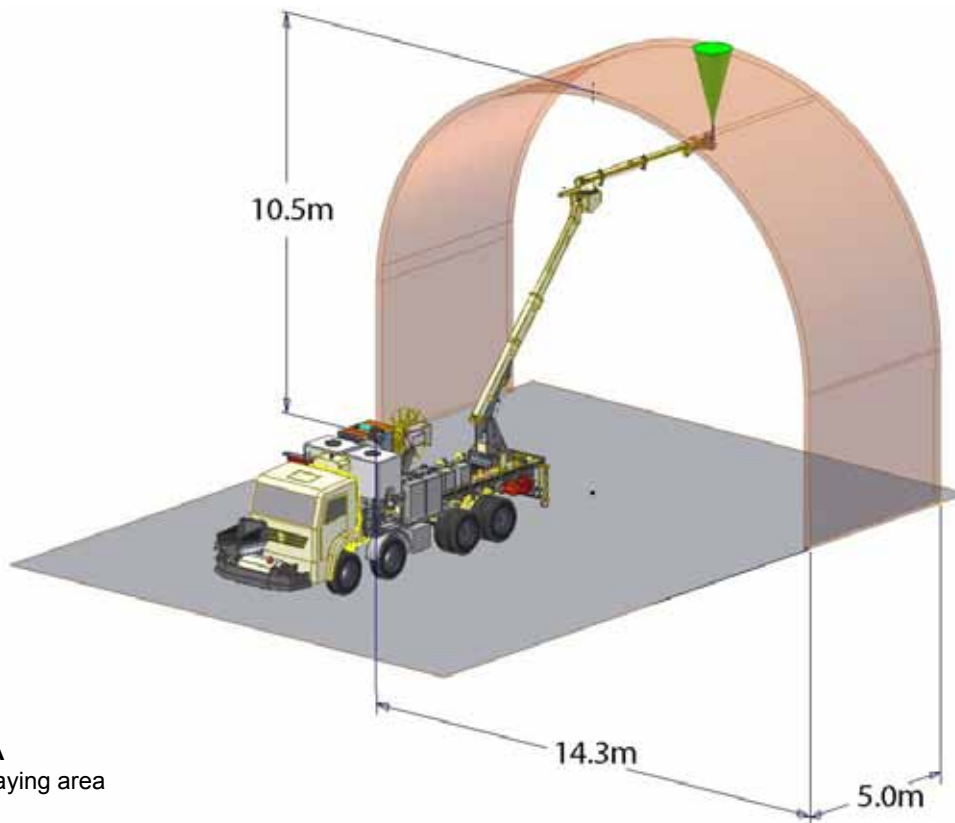


COVERAGE AREA OF SB508 BOOM

Normet reserves the right to change this specification without further notice.

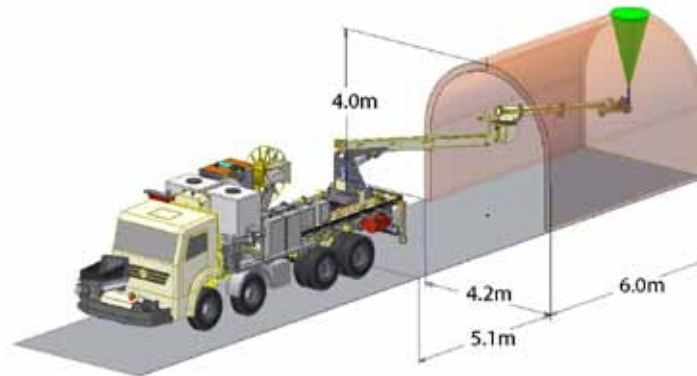


REACH AREA
Maximum spraying area

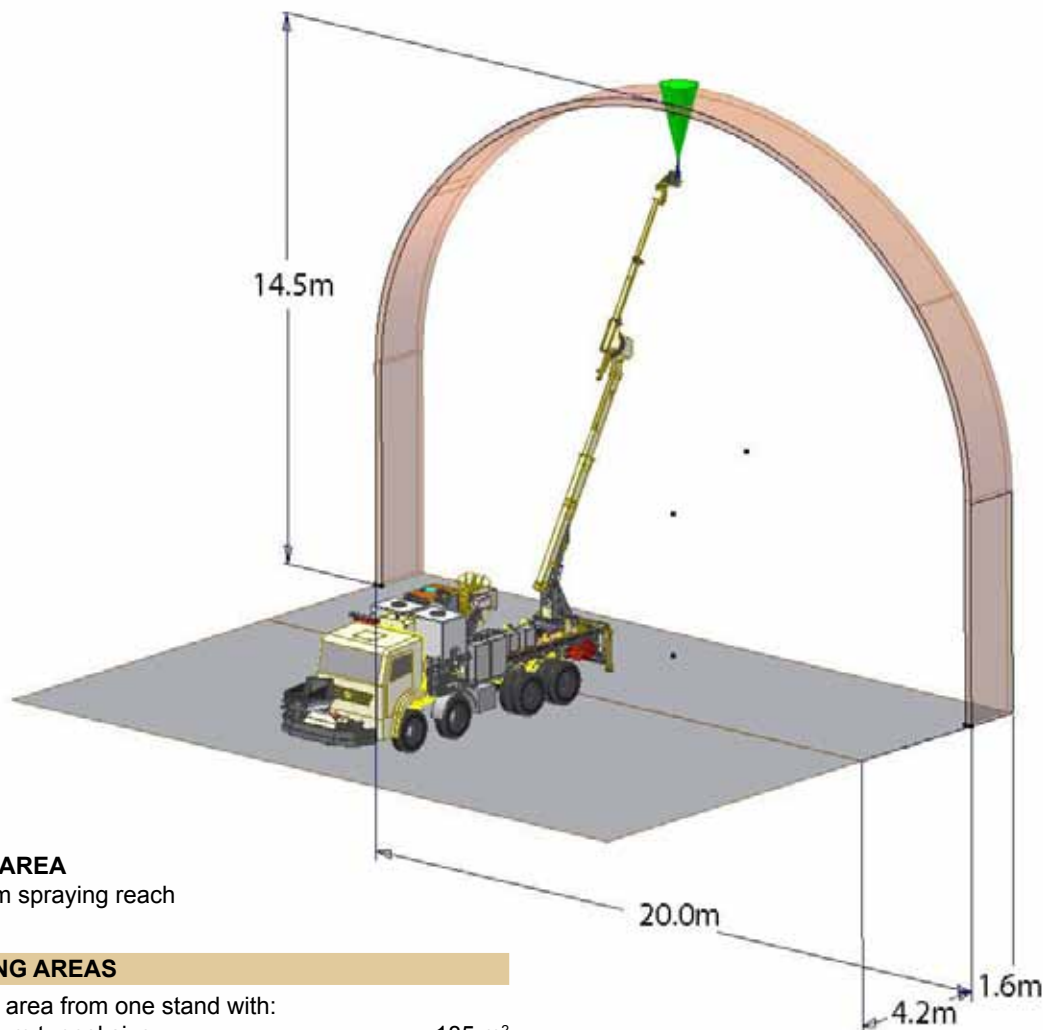


REACH AREA
Optimized spraying area

Normet reserves the right to change this specification without further notice.



REACH AREA
Minimum spraying area



REACH AREA
Maximum spraying reach

SPRAYING AREAS

Spraying area from one stand with:

- maximum tunnel size 185 m²
- minimum tunnel size 62 m²
- optimized tunnel size 146 m²

Normet reserves the right to change this specification without further notice.